

LEVEL REGULATOR FOR HAZARDOUS AREAS

A96 EA3--

GENERALITY

To guarantee the working safety in areas with fire or explosion risks, like diesel tanks or cesspools which develop flammable or explosive vapors, it is necessary that you connect the float to the electric circuit through an EEx-i active safe barrier.

The system we propose is composed of:

- float level regulator A96
- control unit with a safe barrier EA31M/32F

FLOAT LEVEL REGULATOR A96 GENERAL CHARACTERISTICS

Float level regulator to control directly the diesel or high temperature liquids level (max. 60° C and 4 bar).

The external body is in stainless steel AISI 304 and the electric cable has inner and outer sheathes suitable to diesel and temperature range.

To control the minimum OR the maximum level you use just one regulator, but to control both the minimum and the maximum liquid level more than 1,5-2 cm. then you need two regulators one mounted level with the minimum point and the other level with the maximum point.

TECHNICAL CHARACTERISTICS

Electric cable section 2x1mm +T with silicon sheathes suitable to a maximum temperature of 60° C.

Outer body in stainless steel AISI 304

Switch with self-cleaning contacts 10 A - 250 V. To control the coil of the contactor, it is not suitable to control directly the motor.

Max. working pressure 4 bar.

CONTROL UNIT WITH INTRINSICALLY EEx-i SAFE BARRIER CODE EA3--

For mounting on DIN RAIL;

Protection (EEx-i) IIC certified by CESI according to CENELEC/CEI regulations

Active barrier suitable to 0, 1, 2 division (valid for 0 division).

Voltage 24V or 230V 50Hz

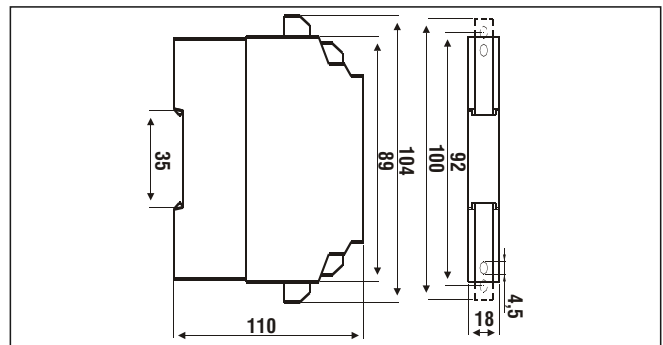
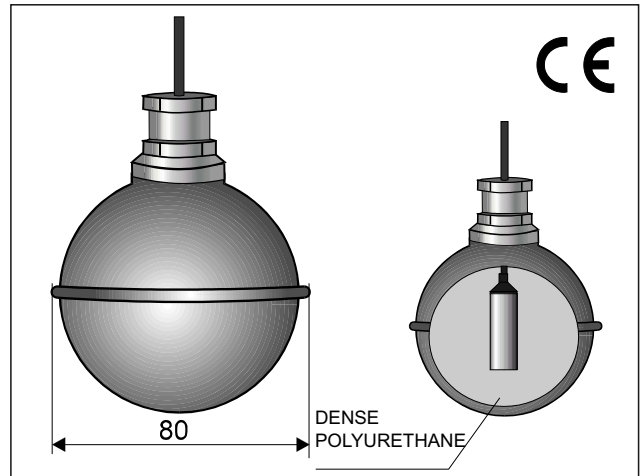
Galvanic insulation at the entry, outlet and voltage circuit.

LED lamp and facilitated harness.

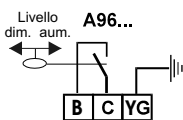
Enclosure in plastic material, autoextinguishing and not dripping, SE1.

It can be connected to 1 or 2 regulators, so it is possible to control just one regulator or a pump between a minimum and a maximum.

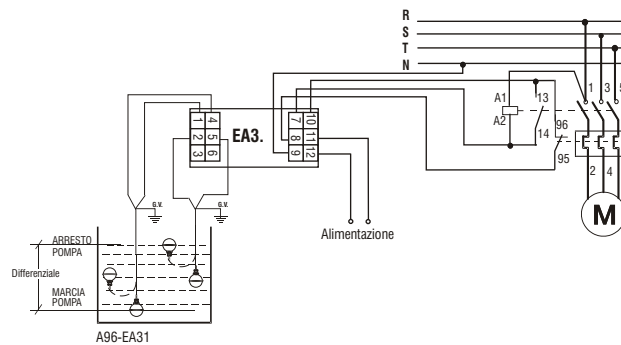
A96 regulator can be directly connected to the coil of the contactor if you have not to control any liquid with explosion or fire risk without employing the EA31M/EA32F control unit.



WIRING DIAGRAM FOR EMPTING PUMP



WIRING DIAGRAM FOR FILLING PUMP



FLOAT LEVEL REGULATOR FOR DIESEL AND HIGH TEMPERATURE LIQUIDS

TYPE	CABLE LENGTH	CONDUCTORS	PROTECTION
A96C	5 Mt.	2+ \perp	IP68
A96D	15 Mt.	2+ \perp	IP68

CONTROL UNIT WITH AN INTRINSICALLY SAFE ACTIVE BARRIER

TYPE	Voltage	Entry from hazardous area	Outletto hazardous areas	Applications	Protection
EA32F	24 V - 50Hz	Un protected contacts	2 relay with 1 deflection contacts	Galvanic de-coupling of unprotected contacts from a hazardous area	IP40
EA31M	220 V - 50Hz	NA/NC voltage free	250V-2,5A-100VAV	Outlet through a relay towards a sure area.	IP40